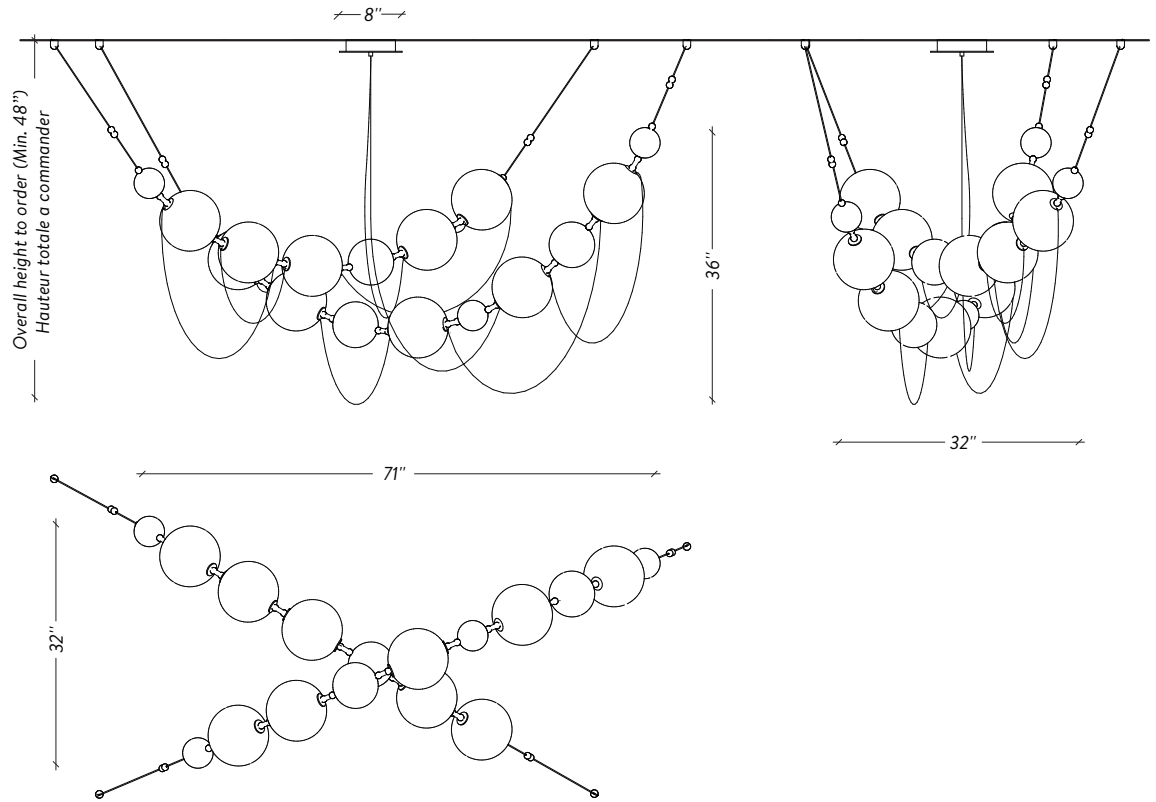


LAROSE
GUYON

COCO-DE-MER



LAROSE
GUYON



twentieth
sales@twentieth.net
323.904.1200
www.twentieth.net

SPÉCIFICATIONS

DIMENSIONS

Configuration 01

71" x 32" x 36" H - 48 lbs

Overall height minimum 48"

Hauteur totale minimum 48"

CABLES

Not adjustable / Overall length to order

Non ajustable / Longueur totale à la commande

SHADE / DIFFUSEUR

8" Hand blown glass ball

Globe 8" de verre soufflé à la main

SOURCE

Dimmable LED / DEL dimmable

INPUT: 120V

Tri-Mode Dimming™ :

TRIAC, ELV & 0-10 V (Upon Request /

Sur demande)

2700K (Dim-to-Warm 2200K to 2700K)

Constant current driver / *Transformateur à*

courant constant

2 880 Lumens - 40 W - 50 000h

CERTIFICATION

UL listed for Canada and USA

Certifié UL pour le Canada et E-U

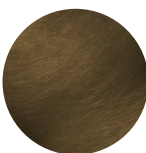


COMPATIBLE DIMMER LIST/

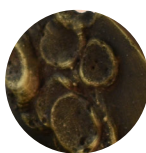
LISTE DE GRADATEUR COMPATIBLE

Lutron	DVCL-153P *Recommended
Leviton	IPI06-1LZ
Leviton	6631-2
Lutron	S-603PG
Lutron	DV-600P
Lutron	TGCL-153P
Lutron	S-600P
Leviton	VPE06

FINISHES / FINIS



Dark Aged Brass
Laiton Antique foncé



Hand textured metal
Métal texturé à la main



Textured clear glass
Verre texturé clair



Textured white matte glass
Verre mat blanc texturé

LAROSE
GUYON


HANDMADE
IN CANADA

twentieth
sales@twentieth.net
323.904.1200
www.twentieth.net