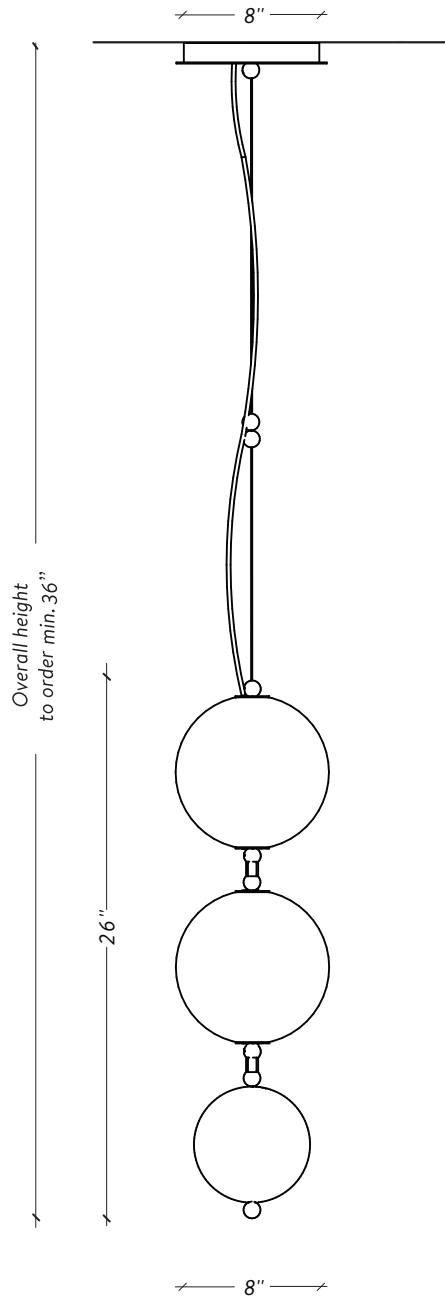


LAROSE  
GUYON

twentieth  
www.twentieth.net  
sales@twentieth.net  
323.904.1200



# COCO XS-02



LAROSE  
GUYON

twentieth  
www.twentieth.net  
sales@twentieth.net  
323.904.1200

  
HANDMADE  
IN CANADA

twentieth  
sales@twentieth.net  
323.904.1200  
www.twentieth.net

# SPÉCIFICATIONS

## DIMENSIONS

8" x 8" x 26" H - 8 lbs

## CABLES

Not adjustable / Overall length to order - Minimum 36"

*Non ajustable / Longueur totale à la commande - Minimum 36"*

## SHADE / DIFFUSEUR

8" Hand blown glass ball

*Globe 8" de verre soufflé à la main*

## SOURCE

Dimmable integrated LED / *DEL intégré dimmable*

INPUT: 120V

Tri-Mode Dimming™ :

TRIAC, ELV & 0-10 V (Upon Request / *Sur demande*)

2700K (Dim-to-Warm 2200K to 2700K)

Constant current driver / *Transformateur à courant constant*

576 Lumens - 8.4 W - 50 000h

## CERTIFICATION

UL listed for Canada and USA

*Certifié UL pour le Canada et E-U*



## COMPATIBLE DIMMER LIST/

### LISTE DE GRADATEUR COMPATIBLE

<b>Lutron</b>	<b>DVCL-153P *Recommended</b>
Leviton	IPI06-1LZ
Leviton	6631-2
Lutron	S-603PG
Lutron	DV-600P
Lutron	TGCL-153P
Lutron	S-600P
Leviton	VPE06

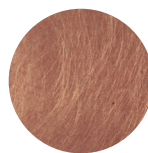
## FINISHE TO ORDER / FINIS À COMMANDER



Aged Brass  
*Laiton Antique*



Aged Bronze  
*Bronze Antique*



Aged Copper  
*Cuivre Antique*



Satin Nickel  
*Nickel Satiné*



Satin Black  
*Noir Satiné*



Alabaster White glass  
*Verre Blanc Albâtre*

LAROSE  
GUYON

twentieth  
www.twentieth.net  
sales@twentieth.net  
323.904.1200

  
HANDMADE  
IN CANADA

twentieth  
sales@twentieth.net  
323.904.1200  
www.twentieth.net