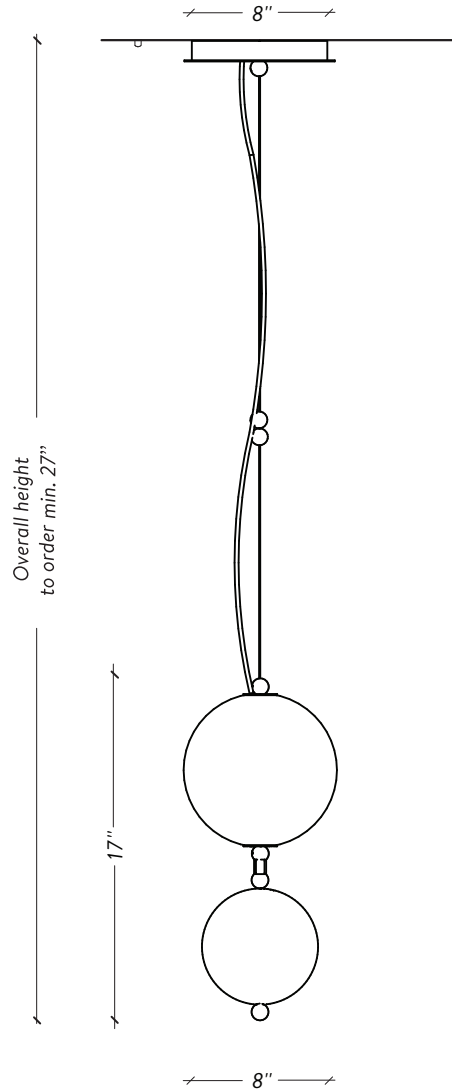




LAROSE
GUYON

COCO XS-01



LAROSE
GUYON

+1 450.583.5335
INFO@LAROSEGUYON.COM
621 MARIE-VICTORIN
VERCHÈRES, QUÉBEC
CANADA, JOL 2R0


HANDMADE
IN CANADA

twentieth
sales@twentieth.net
323.904.1200
www.twentieth.net

SPÉCIFICATIONS

DIMENSIONS

8" x 8" x 17" H - 5,5 lbs

CABLES

Not adjustable / Overall length to order - Minimum 27"

Non ajustable / Longueur totale à la commande - Minimum 27"

SHADE / DIFFUSEUR

8" Hand blown glass ball

Globe 8" de verre soufflé à la main

SOURCE

Dimmable integrated LED / DEL intégré dimmable

INPUT: 120V

Tri-Mode Dimming™ :

TRIAC, ELV & 0-10 V (Upon Request / Sur demande)

2700K (Dim-to-Warm 2200K to 2700K)

Constant current driver / Transformateur à courant constant

2 88 Lumens - 7.6 W - 50 000h

CERTIFICATION

UL listed for Canada and USA

Certifié UL pour le Canada et E-U

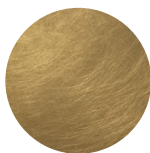


COMPATIBLE DIMMER LIST/

LISTE DE GRADATEUR COMPATIBLE

Lutron	DVCL-153P *Recommended
Leviton	IP106-1LZ
Leviton	6631-2
Lutron	S-603PG
Lutron	DV-600P
Lutron	TGCL-153P
Lutron	S-600P
Leviton	VPE06

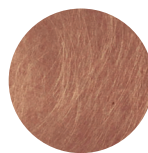
FINISHE TO ORDER / FINIS À COMMANDER



Aged Brass
Laiton Antique



Aged Bronze
Bronze Antique



Aged Copper
Cuivre Antique



Satin Nickel
Nickel Satiné



Satin Black
Noir Satiné



Alabaster White glass
Verre Blanc Albâtre

LAROSE
GUYON

+1 450.583.5335
INFO@LAROSEGUYON.COM
621 MARIE-VICTORIN
VERCHÈRES, QUÉBEC
CANADA, J0L 2R0


HANDMADE
IN CANADA

twentieth
sales@twentieth.net
323.904.1200
www.twentieth.net