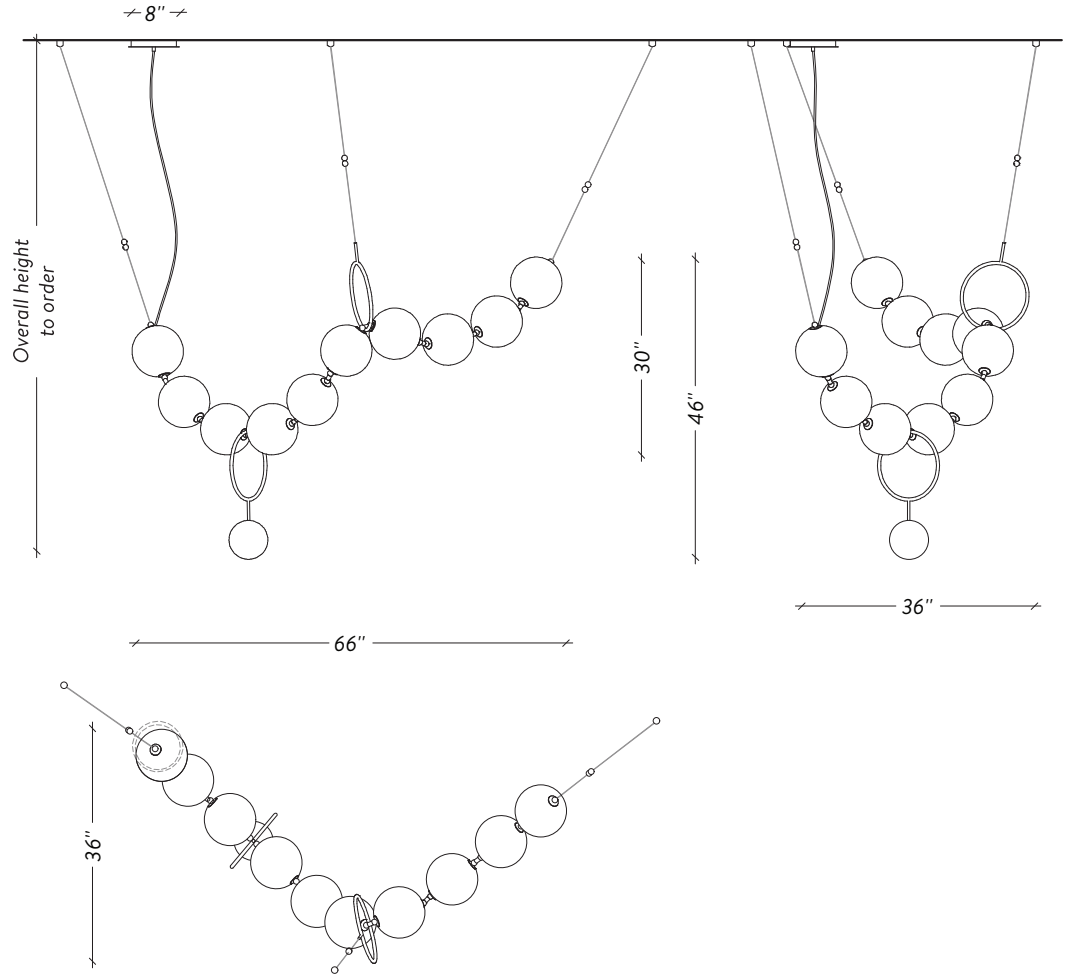




LAROSE  
GUYON

**COCO**  
CONFIGURATION 01

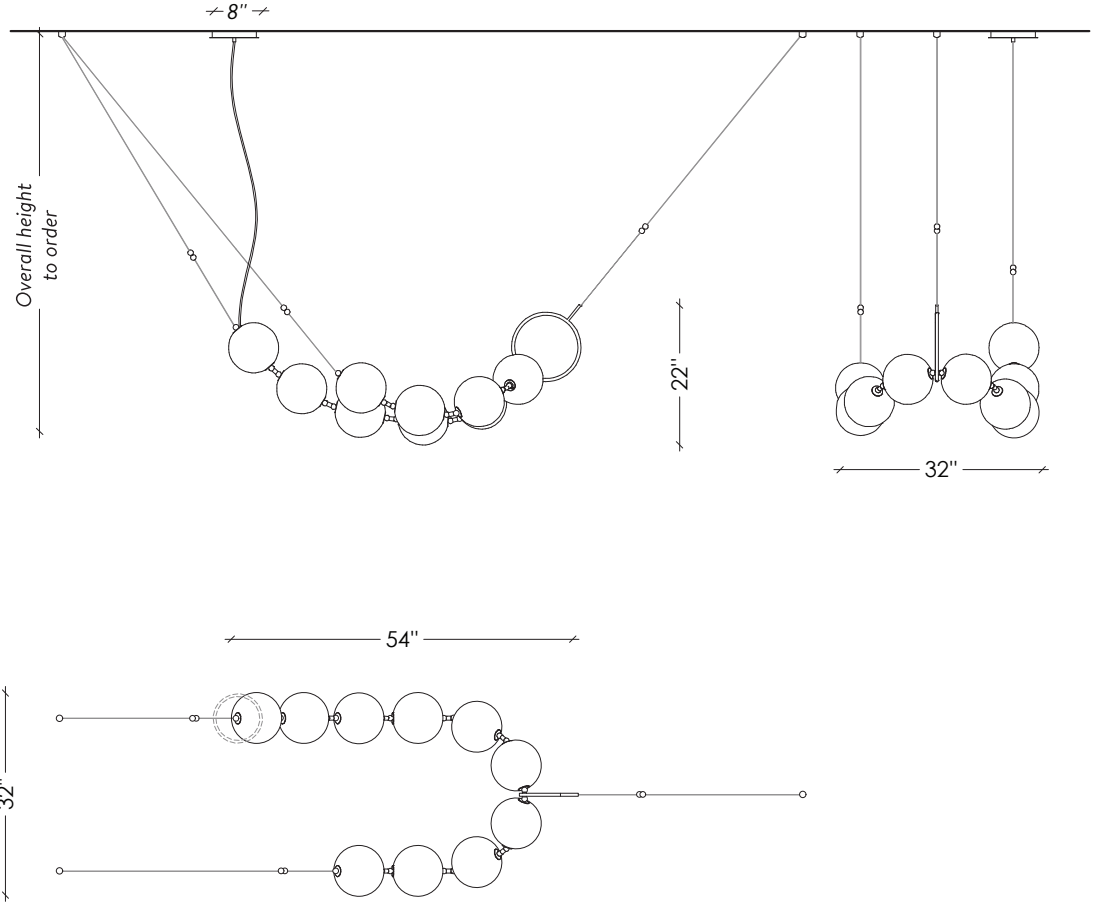


LAROSE  
GUYON



twentieth  
sales@twentieth.net  
323.904.1200  
www.twentieth.net

**COCO**  
CONFIGURATION 02

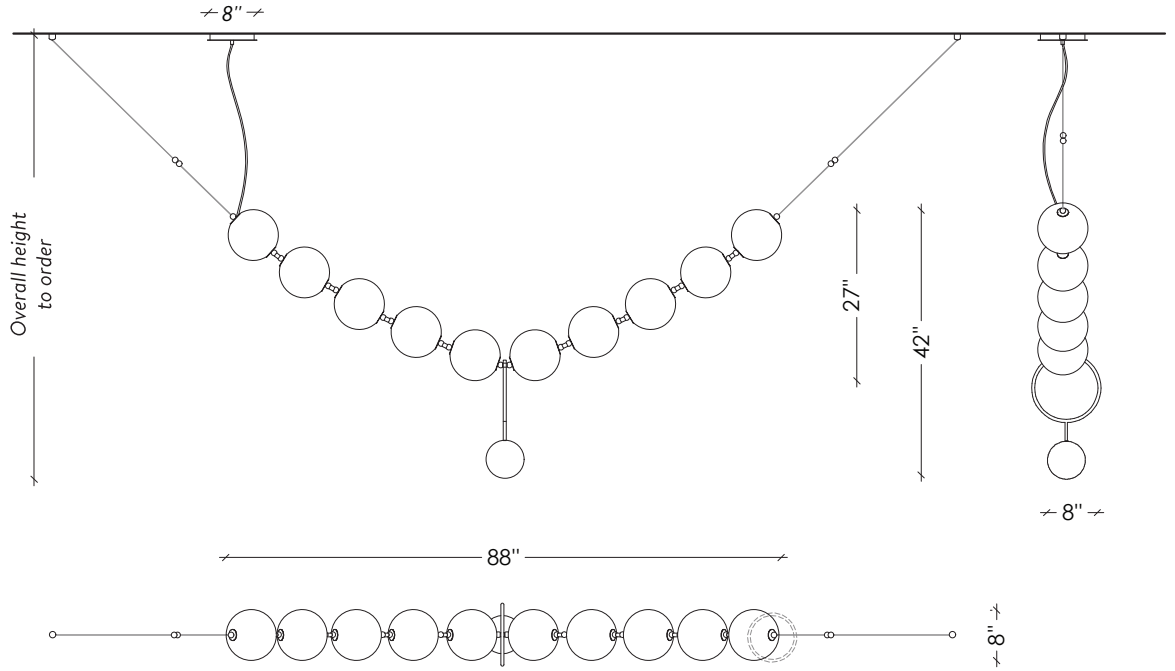


LAROSE  
GUYON



twentieth  
sales@twentieth.net  
323.904.1200  
www.twentieth.net

**COCO**  
CONFIGURATION 03

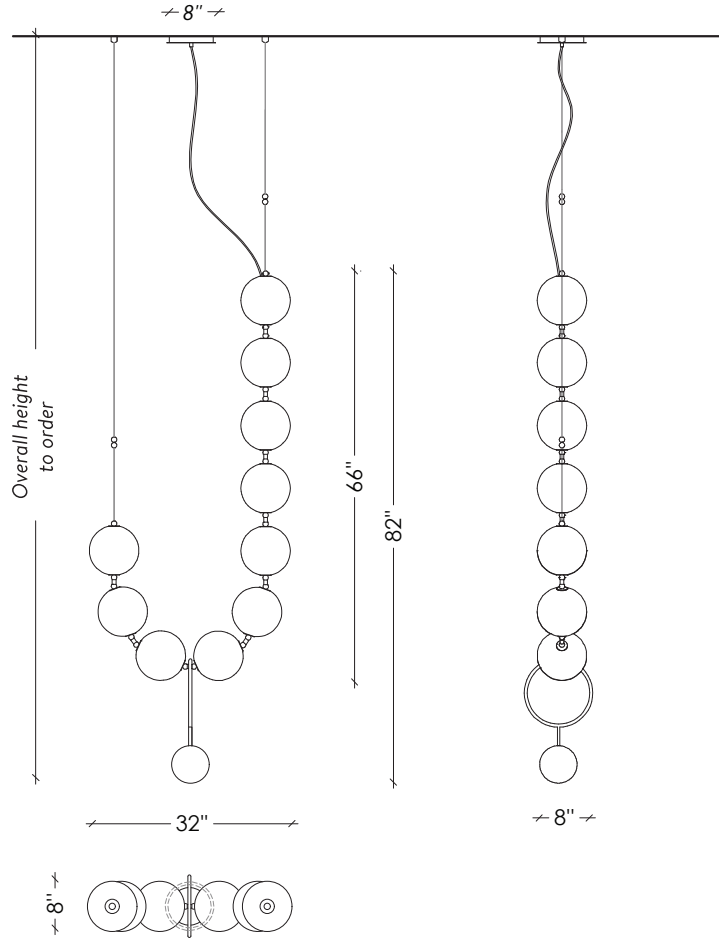


LAROSE  
GUYON



twentieth  
sales@twentieth.net  
323.904.1200  
www.twentieth.net

**COCO**  
CONFIGURATION 04



LAROSE  
GUYON



twentieth

sales@twentieth.net  
323.904.1200  
www.twentieth.net

# SPÉCIFICATIONS

## DIMENSIONS

Configuration 01  
66" x 36" x 46" H - 35 lbs

Configuration 02  
54" x 32" x 22" H - 35 lbs

Configuration 03  
88" x 8" x 42" H - 35 lbs

Configuration 04  
32" x 8" x 82" H - 35 lbs

## CABLES

Not adjustable / Overall length to order  
Non ajustable / Longueur totale à la commande

## SHADE / DIFFUSEUR

8" Hand blown glass ball  
Globe 8" de verre soufflé à la main

## SOURCE

Dimmable LED / DEL dimmable  
120V / 0-10V Upon Request Sur demande  
2700K (Dim-to-Warm 2200K to 2700K)  
2 880 Lumens - 40 W - 50 000h

## LEAD TIME / DÉLAIS DE PRODUCTION

10 - 12 weeks / 10-12 semaines

## CERTIFICATION

UL listed for Canada and USA  
Certifié UL pour le Canada et E-U

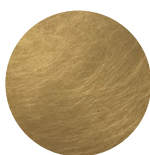


## COMPATIBLE DIMMER LIST/

### LISTE DE GRADATEUR COMPATIBLE

| Lutron  | DVCL-153P *Recommended |
|---------|------------------------|
| Leviton | IPI06-1LZ              |
| Leviton | 6631-2                 |
| Lutron  | S-603PG                |
| Lutron  | DV-600P                |
| Lutron  | TGCL-153P              |
| Lutron  | S-600P                 |
| Leviton | VPE06                  |

## FINISHE TO ORDER / FINIS À COMMANDER



Aged Brass  
Laiton Antique



Aged Bronze  
Bronze Antique



Aged Copper  
Cuivre Antique



Satin Nickel  
Nickel Satiné



Satin Black  
Noir Satiné



Alabaster White glass  
Verre Blanc Albâtre

LAROSE  
GUYON

  
HANDMADE  
IN CANADA

twentieth

sales@twentieth.net  
323.904.1200  
www.twentieth.net