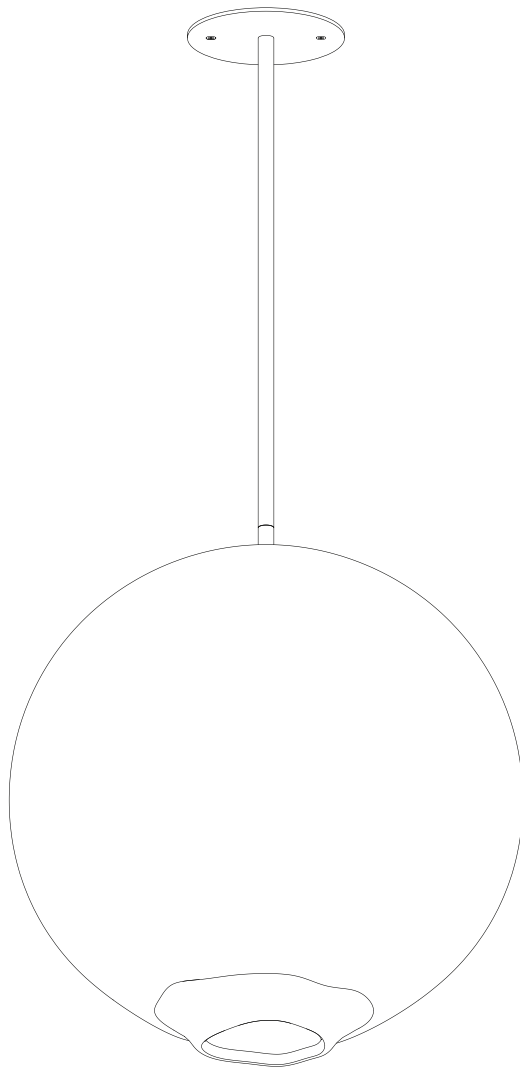




FLOAT 1.0 PENDANT

Installation Instructions



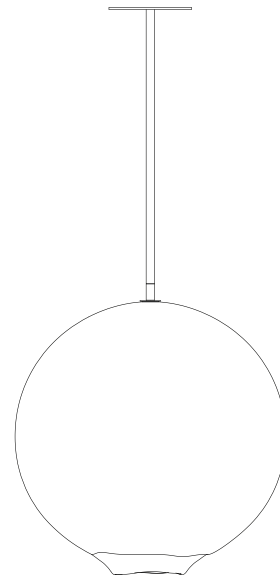


FLOAT 1.0 PENDANT

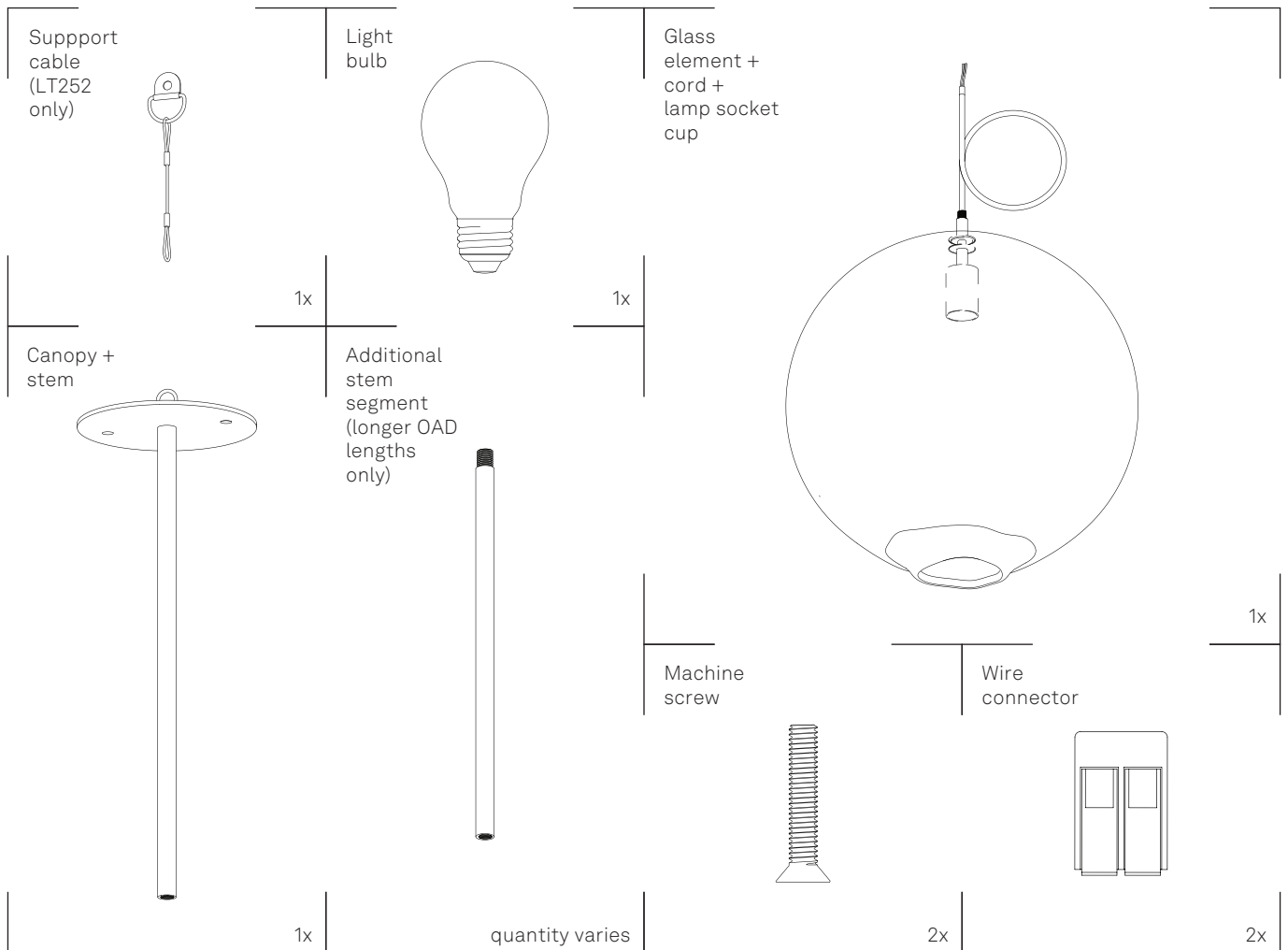
Congratulations on your purchase of a SkLO Float 1.0 Pendant. This product must be installed in accordance with the applicable codes by a person familiar with the construction and operation of the product and the hazards involved, preferably a licensed electrician. Use a maximum 60W bulb.

When unpacking individual items and parts of the light fixture, make sure to lay them out on a protective surface that will neither mar the delicate metal finishes nor scratch the glass. Gloves (nitrile) are provided and must be worn during installation to avoid fingerprints on the finish of the exposed metal parts.

Your SkLO fixture will arrive with the hand-blown glass elements packed separately from the light fixture itself.



CONTENTS:





1. Your SkLO Float Pendant light will arrive partially pre-assembled and with the hand-blown glass shade attached and in place. Note that the glass shade of this pendant fixture is not removable, and is permanently fixed in place around the electrical socket. Unpack the light taking care during installation not to damage the glass shade.
2. Uncoil the electrical wiring at the top of the glass sphere of the fixture and carefully pass the wires through the stem and canopy. Then, attach the female/internally threaded stem to the fixture by threading the open end of the stem onto the exposed threaded nipple on the top of the glass sphere of the fixture (Figure 1a).

For lights with longer OAD lengths, the stem will be in multiple parts. Uncoil the electrical wiring at the top of the glass sphere of the fixture and carefully pass the wires through each stem as you fasten them together and then the canopy at the end. To connect the stems, first, attach one of the lengths of the stem to the fixture by threading the open female/internally threaded end of the stem onto the exposed threaded nipple on the top of the glass sphere of the fixture (Figure 1a). Then, attach the remaining stem lengths by threading the open end of each stem onto the exposed nipple of the other (Figure 1b).

For the 10"/250mm glass option of this light (LT251) proceed to Step 4.

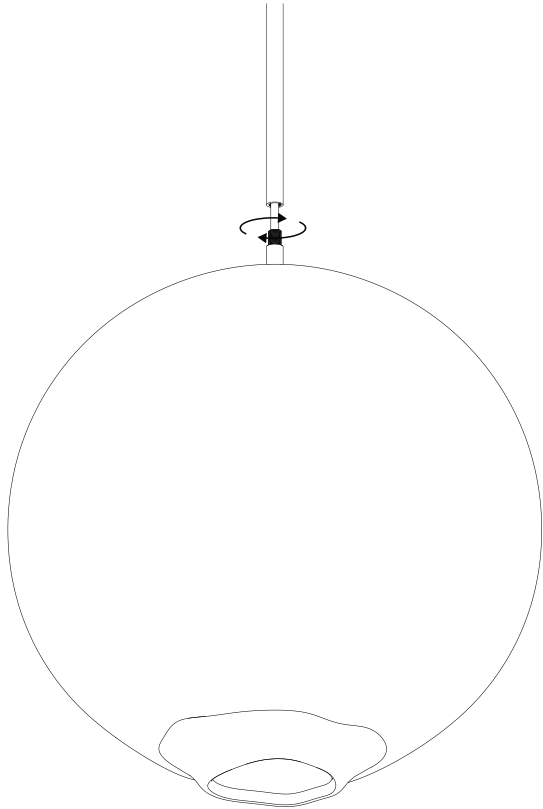
3. The 16"/410mm glass fixture (LT252) comes with a secondary support cable. This cable is required by UL and must support the weight of the fixture, allowing it to be removed and inspected with wiring in place without hanging from the electrical wiring itself. The support cable will be attached to the loop/nut used to attach the canopy to the stem.

Using an appropriate fastener, fasten the loose end of the support cable through the side of the electrical box directly into a structural member through the hole provided in the ring as shown in the drawing (Figure 2).

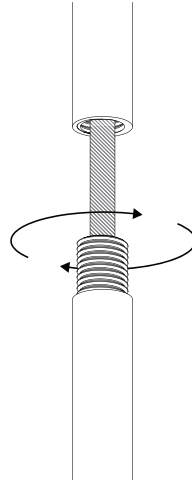
4. Connect the exposed leads of the fixture to the exposed leads in the electrical box, following the wiring diagram and using the provided wire connectors. Attach the ground (TE) wires to ground (TE) wires of the light fixture, phase 1 (L1) to phase 1 (L1) of the light fixture, neutral (N) to neutral (N) of the light fixture (Figure 3a/3b). Please note the number and type of wire connectors may vary.
5. This fixture requires an electrical box with available holes at 3 1/2" on center spacing. If a box with differently spaced threaded holes is present, additional parts may be required to install the fixture properly, such as a universal crossbar (not supplied). Install the canopy by fastening the two supplied 8/32 thread brass machine screws directly into the appropriate holes in the electrical box through the countersunk holes provided in the canopy, making sure that the canopy sits flat and flush against finish surface (Figure 4). Take great care when installing screws so that tools do not slip and scratch the canopy finish, or damage the exposed screw head slots.
6. Install the supplied LED light bulb (60W Max) into the socket (Figure 5).



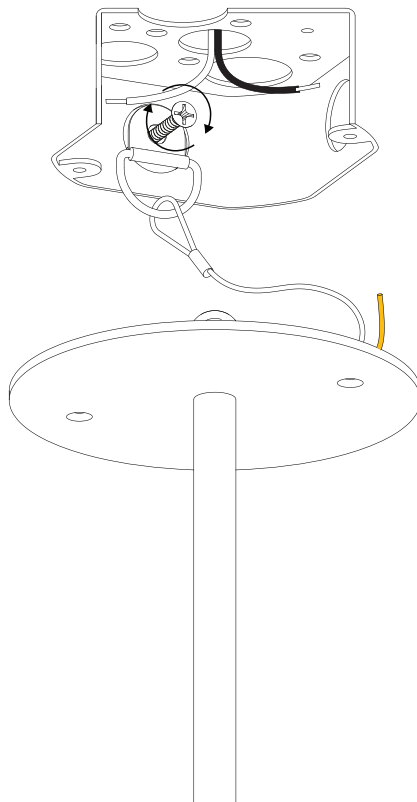
1a.



1b.

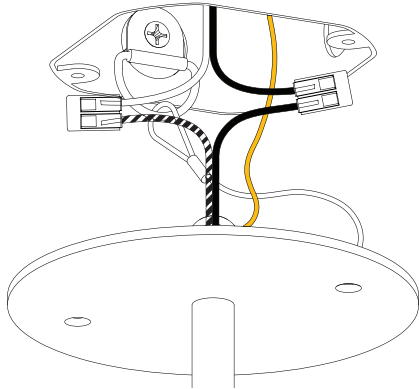


2.

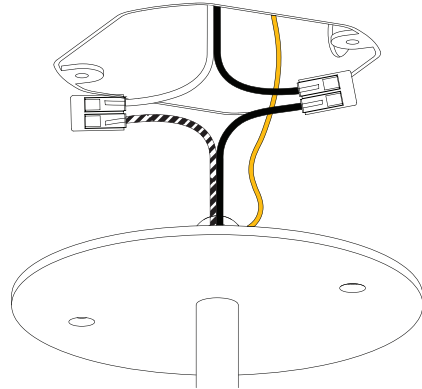




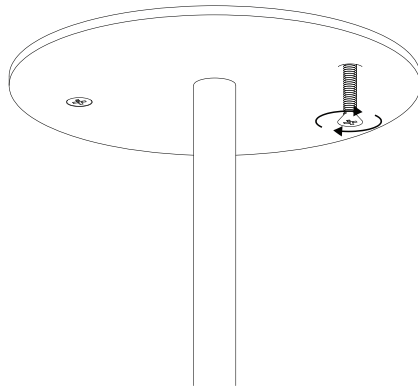
3a. (LT252)



3b. (LT251)



4.



5.

