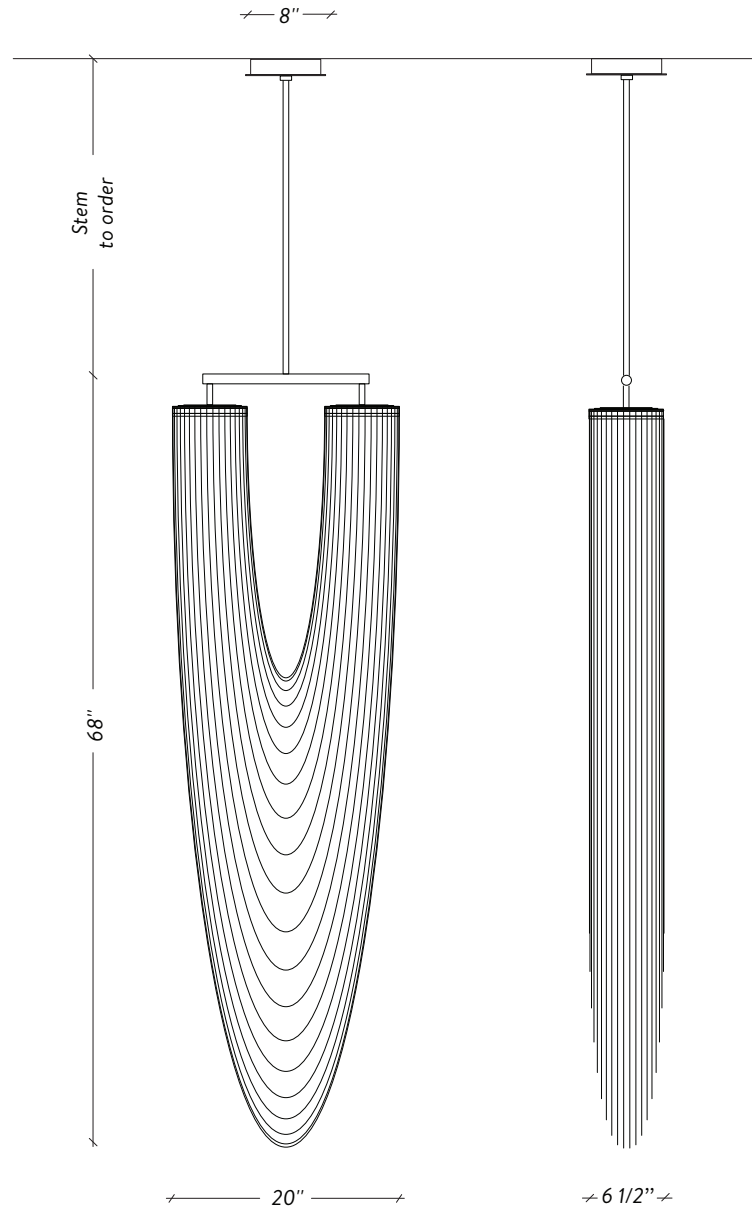




LAROSE  
GUYON

# OTÉRO LARGE



LAROSE  
GUYON



twentieth  
www.twentieth.net  
sales@twentieth.net  
323.904.1200

# SPÉCIFICATIONS

## DIMENSIONS

20" x 6 1/2" x 68" H / 20 lb

## STEM TO ORDER / TIGE À COMMANDER

12", 18", 24" or 36"

Up-charge applies for additional lengths  
*Frais additionnels pour les longueurs supplémentaires*

## SOURCE

Dimmable LED / *DEL dimmable*  
120V / 0-10V Upon Request *Sur demande*  
2700K (Dim-to-Warm 2200K to 2700K)  
720 Lumens - 10 W - 50 000h

## CERTIFICATION

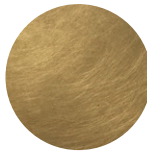
UL listed for Canada and USA  
*Certifié UL pour le Canada et E-U*



## COMPATIBLE DIMMER LIST/ LISTE DE GRADATEUR COMPATIBLE

<b>Lutron</b>	<b>DVCL-153P *Recommended</b>
Leviton	IP106-1LZ
Leviton	6631-2
Lutron	S-603PG
Lutron	DV-600P
Lutron	TGCL-153P
Lutron	S-600P
Leviton	VPE06

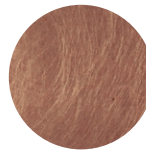
## FINISHE TO ORDER / FINIS À COMMANDER



Aged Brass  
*Laiton Antique*



Aged Bronze  
*Bronze Antique*



Aged Copper  
*Cuivre Antique*



Tarnished Nickel



Aged Brass  
*Laiton Antique*



Aged Bronze  
*Bronze Antique*



Aged Copper  
*Cuivre Antique*



Tarnished Nickel

LAROSE  
GUYON



twentieth  
www.twentieth.net  
sales@twentieth.net  
323.904.1200

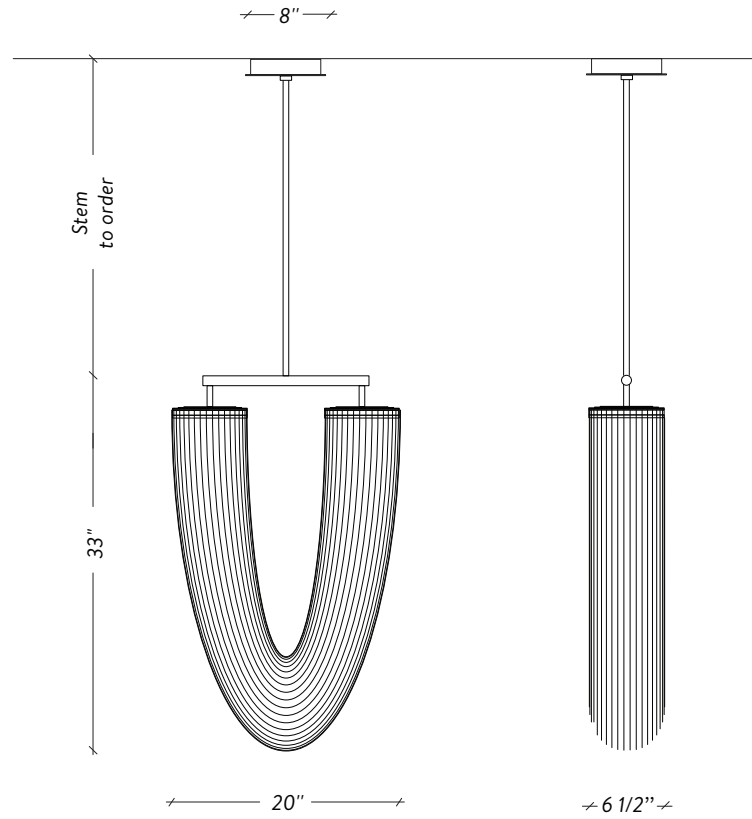




LAROSE  
GUYON



# OTÉRO SMALL



LAROSE  
GUYON

  
HANDMADE  
IN CANADA

twentieth  
www.twentieth.net  
sales@twentieth.net  
323.904.1200

# SPÉCIFICATIONS

## DIMENSIONS

20" x 6 1/2" x 33" H / 15 lb

## STEM TO ORDER / TIGE À COMMANDER

12", 18", 24" or 36"

Up-charge applies for additional lengths  
*Frais additionnels pour les longueurs supplémentaires*

## SOURCE

Dimmable LED / *DEL dimmable*  
120V / 0-10V Upon Request *Sur demande*  
2700K (Dim-to-Warm 2200K to 2700K)  
720 Lumens - 10 W - 50 000h

## CERTIFICATION

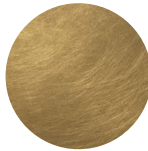
UL listed for Canada and USA  
*Certifié UL pour le Canada et E-U*



## COMPATIBLE DIMMER LIST/ LISTE DE GRADATEUR COMPATIBLE

<b>Lutron</b>	<b>DVCL-153P *Recommended</b>
Leviton	IP106-1LZ
Leviton	6631-2
Lutron	S-603PG
Lutron	DV-600P
Lutron	TGCL-153P
Lutron	S-600P
Leviton	VPE06

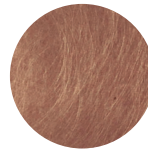
## FINISHE TO ORDER / FINIS À COMMANDER



Aged Brass  
*Laiton Antique*



Aged Bronze  
*Bronze Antique*



Aged Copper  
*Cuivre Antique*



Tarnished Nickel



Aged Brass  
*Laiton Antique*



Aged Bronze  
*Bronze Antique*



Aged Copper  
*Cuivre Antique*



Tarnished Nickel

LAROSE  
GUYON



twentieth  
www.twentieth.net  
sales@twentieth.net  
323.904.1200