

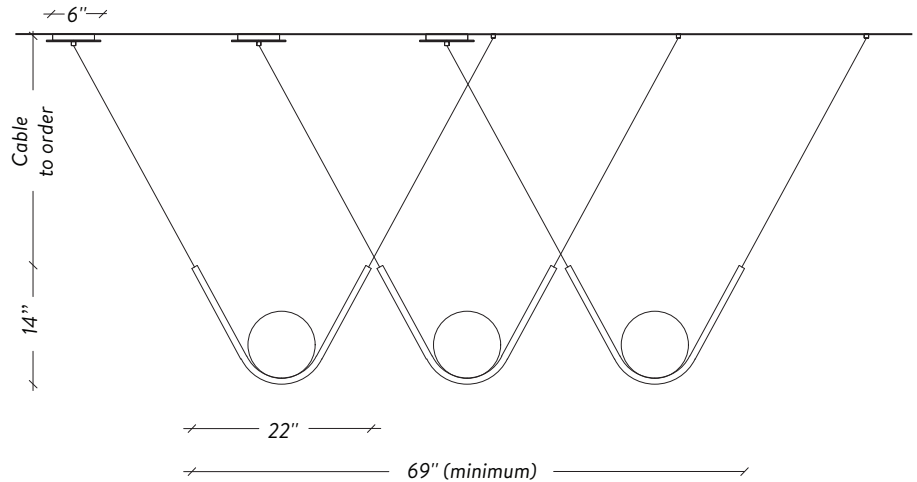


LAROSE  
GUYON

# PERLE 1 - TRIO

OFF CENTER CANOPY / TO ORDER

CANOPÉE DÉCENTRÉE / À COMMANDER

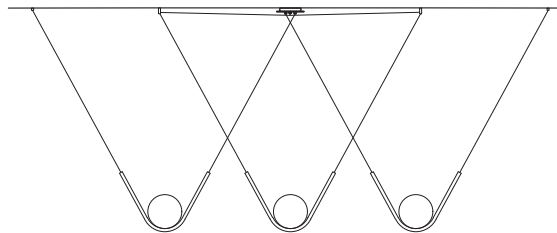
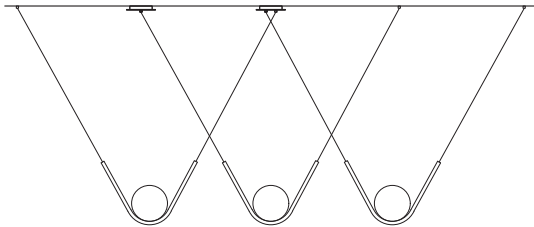


OTHER POSSIBILITIES / TO ORDER

AUTRES POSSIBILITÉS / À COMMANDER

The overall height as well as the overall width influences the location and the configuration of the canopies. Contact us for more details.

*La hauteur totale ainsi que la largeur totale influencent l'emplacement et la configuration des canopées. Contactez-nous pour plus de détails*



LAROSE  
GUYON



twentieth

sales@twentieth.net

323.904.1200

www.twentieth.gallery

# SPÉCIFICATIONS

## DIMENSIONS

(1) Perle 1: 22" x 8" x 14"H - 10lbs  
Trio Perle 1: 69" (Minimum) x 8" x 14"H

## CABLES

**Lenght to order / 4FT included (adjustable)**

**Longueur à commander / 4Pi inclus (ajustable)**

Up-charge applies for additional lengths

*Frais additionnels pour longueurs supplémentaires*

## CANOPY / CANOPÉE

Off center

*Décentrée*

## SHADE / DIFFUSEUR

8" Hand blown glass ball

*Globe 8" de verre soufflé à la main*

## SOURCE

120V - G9 LED - 5W (60W equivalent) - 2700K

## CERTIFICATION

UL listed for Canada and USA

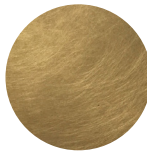
*Certifié UL pour le Canada et E-U*



## LEAD TIME / DÉLAIS DE PRODUCTION

10 - 12 weeks / 10 - 12 semaines

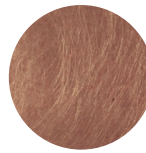
## FINISHE TO ORDER / FINIS À COMMANDER



Aged Brass  
*Laiton Antique*



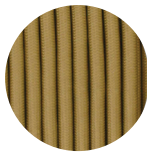
Aged Bronze  
*Bronze Antique*



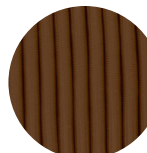
Aged Copper  
*Cuivre Antique*



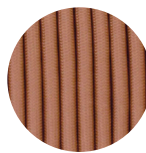
Tarnished Nickel



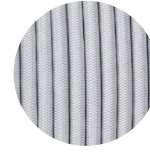
Brass cable  
*Cable Laiton*



Bonze cable  
*Cable Bronze*



Copper cable  
*Cable Cuivre*



Silver cable  
*Cable Argent*



Alabaster White glass

LAROSE  
GUYON



HANDMADE  
IN CANADA

twentieth

sales@twentieth.net

323.904.1200

www.twentieth.gallery