

LUNA
A SERIES

SMALL SCONCE
INSTALLATION GUIDE

GABRIEL SCOTT

twentieth

sales@twentieth.net
323.904.1200
www.twentieth.net

IMPORTANT: Please contact the Gabriel Scott technical support for assistance regarding malfunctions and damaged parts.

**+1 (212) 837-2923
support@gabriel-scott.com**

ATTENTION!

Certified electrician recommended for electrical installation.

Terminal Block not included. Installation may require advice from a qualified person.

Junction box rated for minimum of 25lbs or structural blocking required to support fixture.

For all LED fixtures, use only with class 2 power unit.

The light source contained in this luminaire shall only be replaced by the manufacturer or his service agent or a similar qualified person. Contact manufacturer for service.

PROVIDED SUPPLIES

Small Sconce fixture and glass

Canopy

LED driver; Input: local line voltage, output 12Vdc SELV, 5A, max 60 watt class 2 LED driver

REQUIRED TOOLS AND HARDWARE

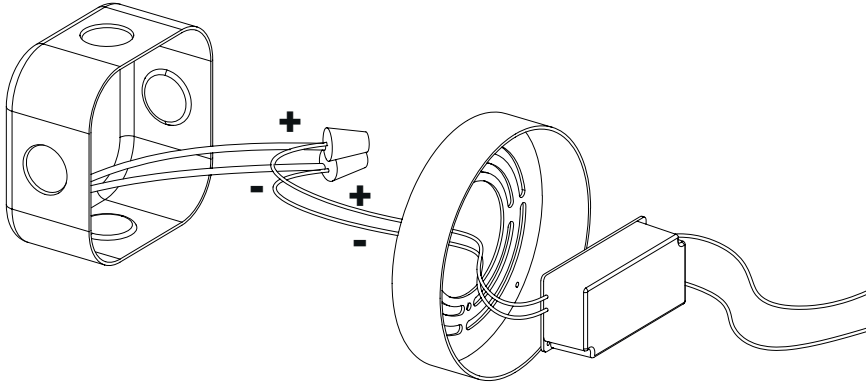
Flat head screwdriver

4x 2-pole wiring terminals, screws or screwless, 12-18AWG (1.0-2.5mm²) rated for 600V, 15A / ex: WAGO 222-412

INSTRUCTIONS

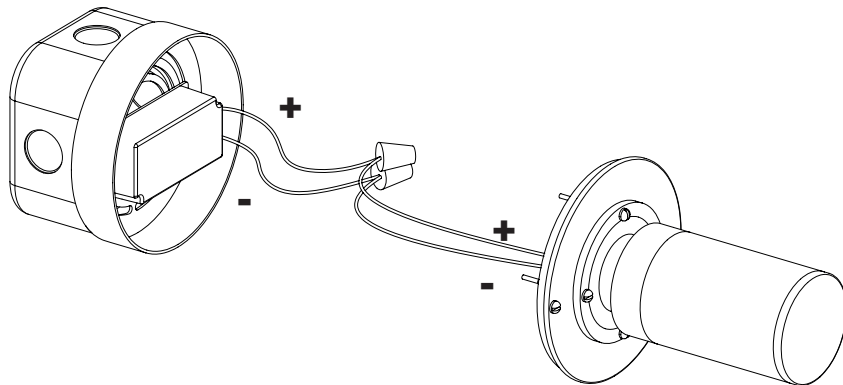
STEP 1

Wire the LED driver to the main power source and screw driver inside the canopy.



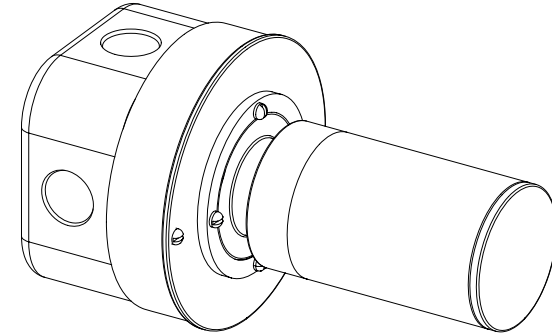
STEP 2

Wire the black wire (+) of the the fixture to the positive lead of the LED driver and the white wire (-) of the fixture to the neutral lead of the LED driver.



STEP 3

Screw the fixture onto the installed canopy by using the four flat head screws located on the canopy front plate.



STEP 4

Carefully slide the supplied glass beads over the glass tube in a way that the bead is centered on the tube.

